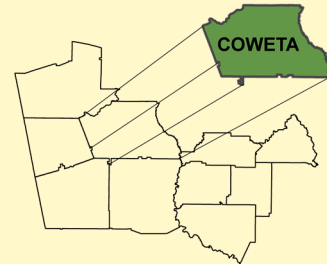


## COWETA COUNTY FY'20 FACTS



Walking Dead, Downtown Senoia, GA



### AGING SERVICES

- ◆ meals provided: 40,956
- ◆ Medicare counseling (# of people served): 1,692
- ◆ in-home services: 2,180 hours
- ◆ calls coming in for services: 2,613

### TRANSIT SERVICES

- ◆ number of vehicles: 6
- ◆ total number of trips: 30,589
- ◆ purposes:
  - medical: 2,308
  - employment: 4,868
  - seniors: 8,045
  - social/recreation: 502
  - education: 5,612
  - shopping/personal: 404
  - non-ambulatory: 431



### WORKSOURCE THREE RIVERS

- ◆ adults served: 233
- ◆ adults in training: 125
- ◆ average wage performance (adults entering employment after completion of services): \$14.43/hourly
- ◆ youth served: 84



### PLANNING SERVICES

- ◆ continued to work with the Census on feedback information for LUCA
- ◆ provided updates on 2020 Census taking activities including important dates and relevant data
- ◆ performed an update to the Comprehensive Economic Development Strategy (CEDS)
- ◆ completed transit analysis maps in support of transit services
- ◆ promotion of Broadband Expansion and TRRC Broadband Taskforce activities
- ◆ performed a development of regional impact review for a proposed county project
- ◆ conducted comprehensive plan review meetings with all local governments to review comprehensive planning efforts
- ◆ completed an EDA Grant Application for Coweta County and Coweta County Water and Sewer Authority
- ◆ performed a full Three Rivers Regional Plan update
- ◆ performed an update to Regionally Important Resources Plan
- ◆ provided monthly reminders of planning deadlines

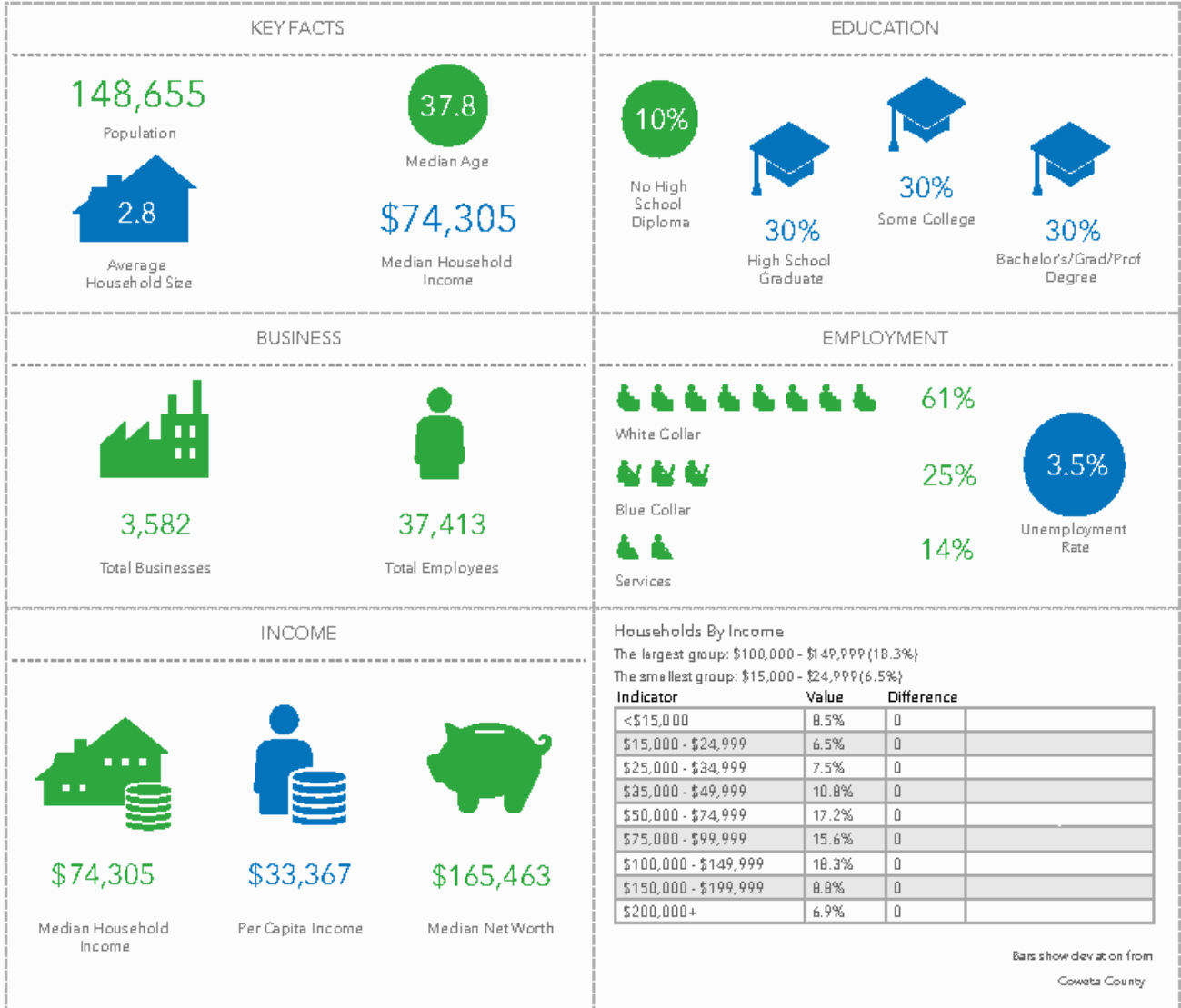
### **THREE RIVERS REGIONAL COMMISSION** **FY'20 REGIONAL FACTS**

- ◆ *282,125 in-home and community meals served*
- ◆ *128,773 rural transportation trips provided*
- ◆ *307 youth and 956 adults served*
- ◆ *\$521,001.89 dollars in local dues leveraged into \$14,340,031 in services*

Key Facts

Coweta County, GA  
 Coweta County, GA (13077)  
 Geography: County

Prepared by Esri



Source: This infographic contains data provided by Esri, Esri and Infogroup. The vintage of the data is 2019.

Additional data available at: [www.threeriversdata.com](http://www.threeriversdata.com)